



Non-GMO
Summit 2023



CARAMURU

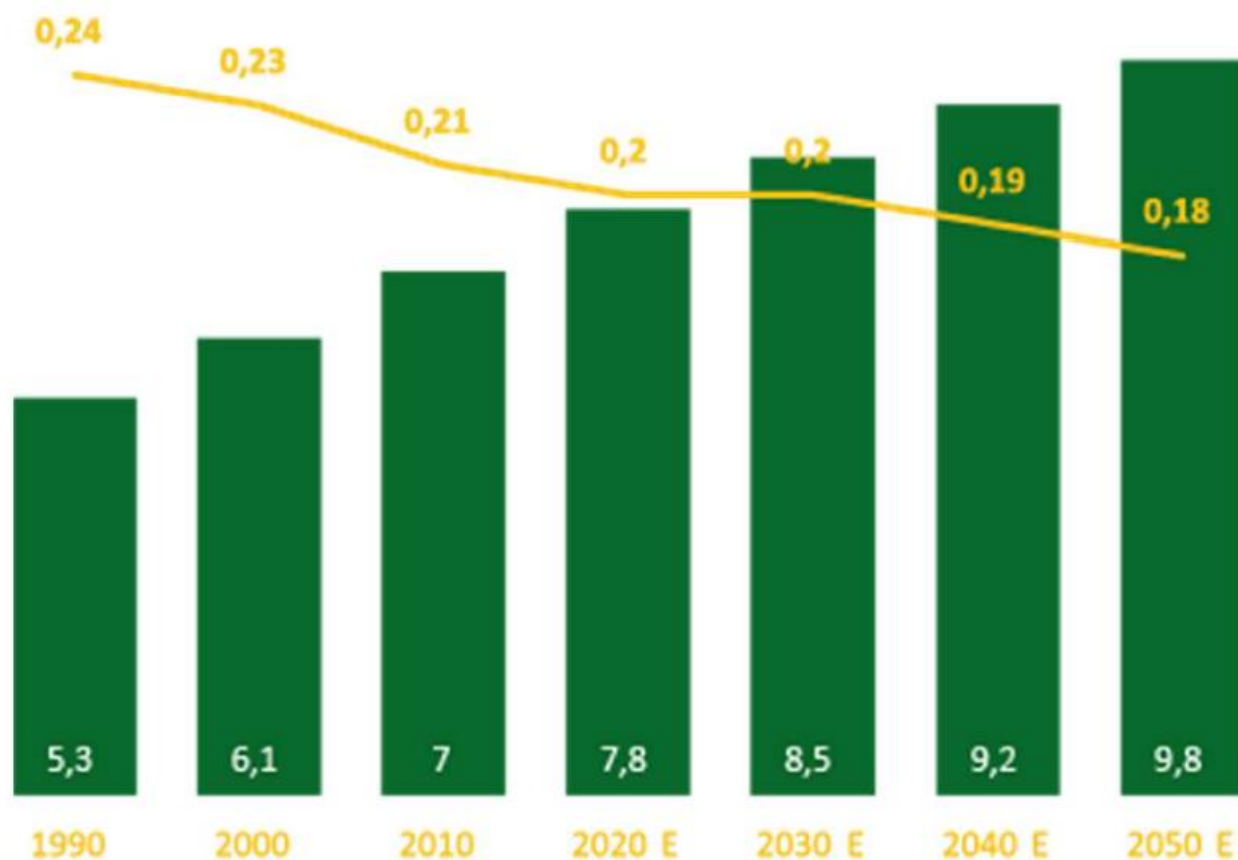


Sinhá



Brazilian Welcome Dinner

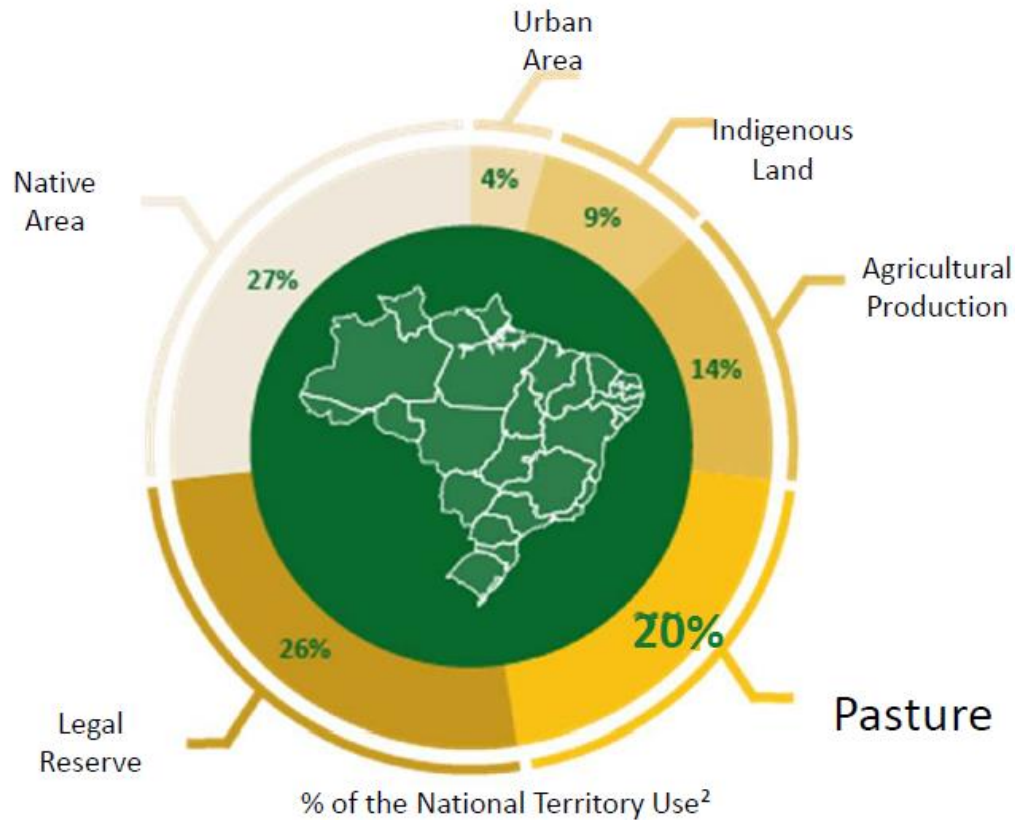
World population is increasing while land availability is scarce



World Population (Billion)¹

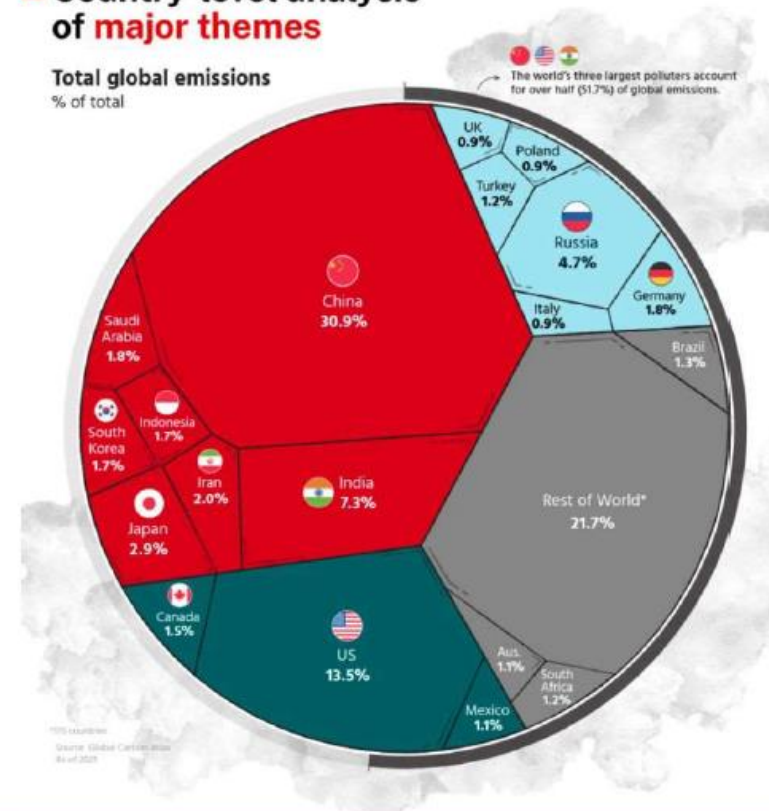
Production Area per Capita (Hectares)¹

65% of Brazilian territory is protected & and Brazil is feeding the World with a low carbon footprint



Country-level analysis of major themes

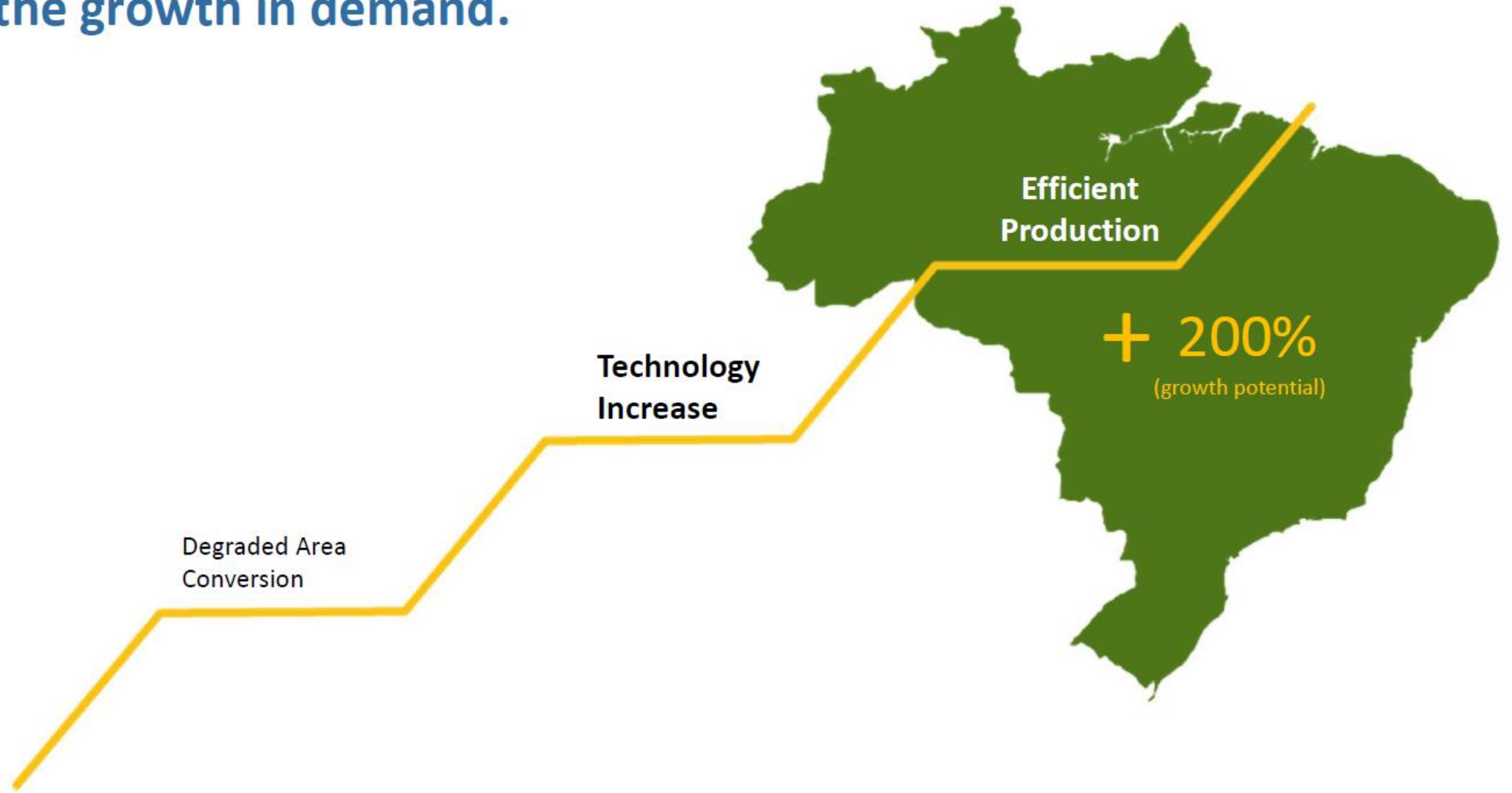
Total global emissions
% of total



Brazil	8.510.000 km²
Euro Zone	2.801.552 km²

Brazil (pop. 214 million)	1.3%
Euro Zone (pop. 346 million)	14.3%

Brazil is the most well-positioned country to meet the growth in demand.



Brazilian agribusiness growth lead by soybean production (2020)



Brazil Largest Soyabean Producer in 2020/2021



Increase in Productivity and Production Growth (last 10 years)

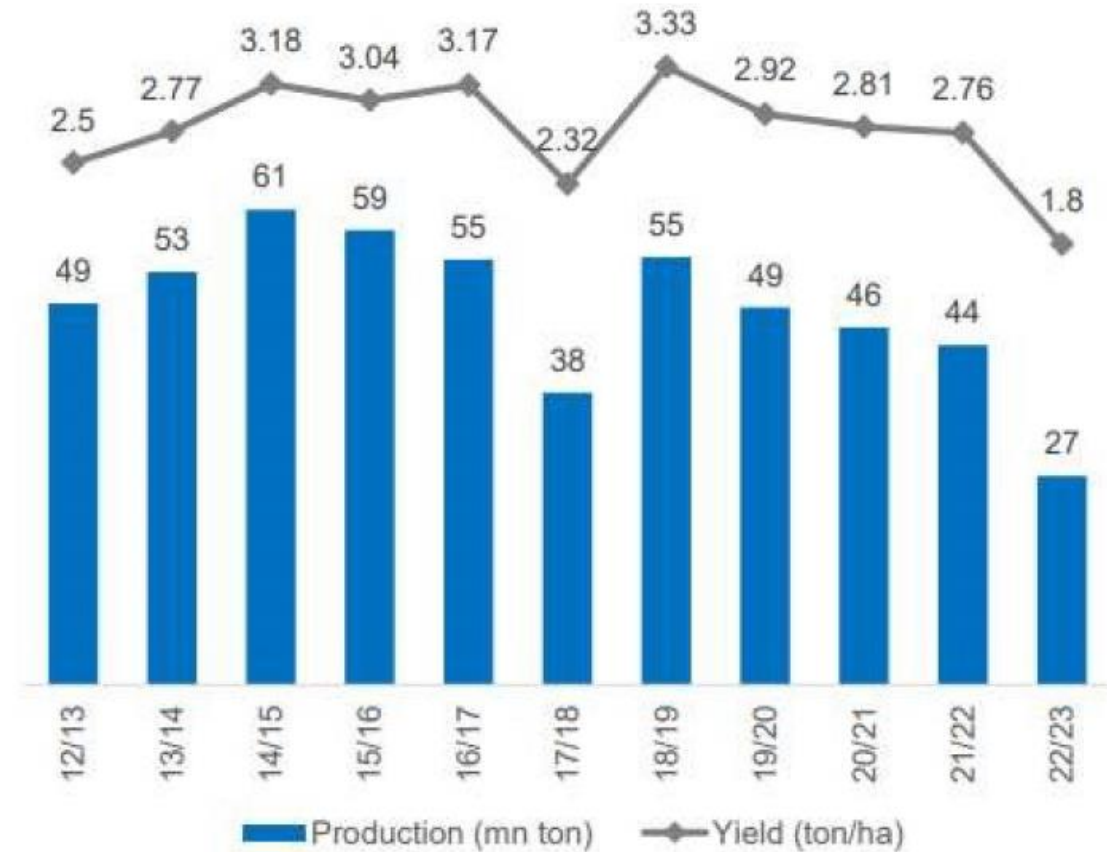


Brasil:



[Kein Titel]

Argentina:



Brazil positioning in a Global Perspective

Soybean: Since 2010/11 Brasil represented (i) 64% of the global planted area growth (ii) 75% of growth production (iii) 82% of the global exports' growth (global trading)

Soybean planted area (mn ha)

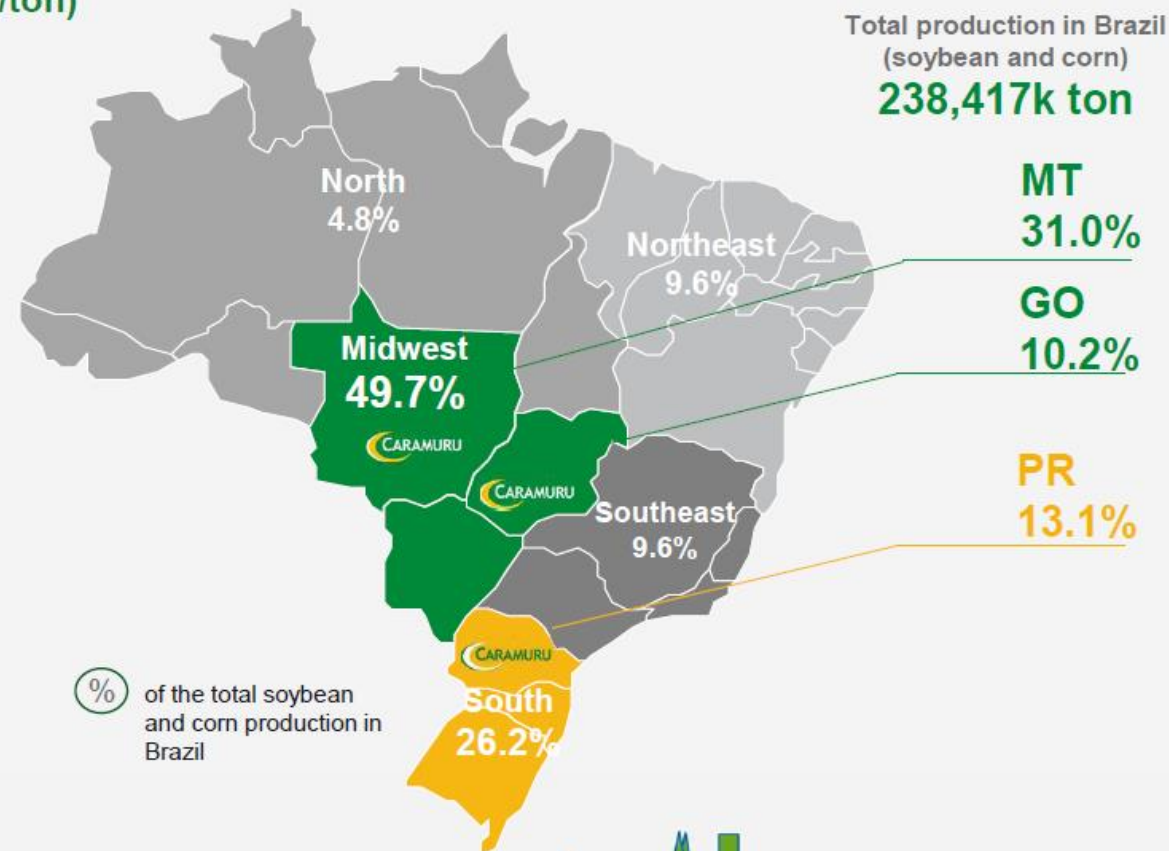
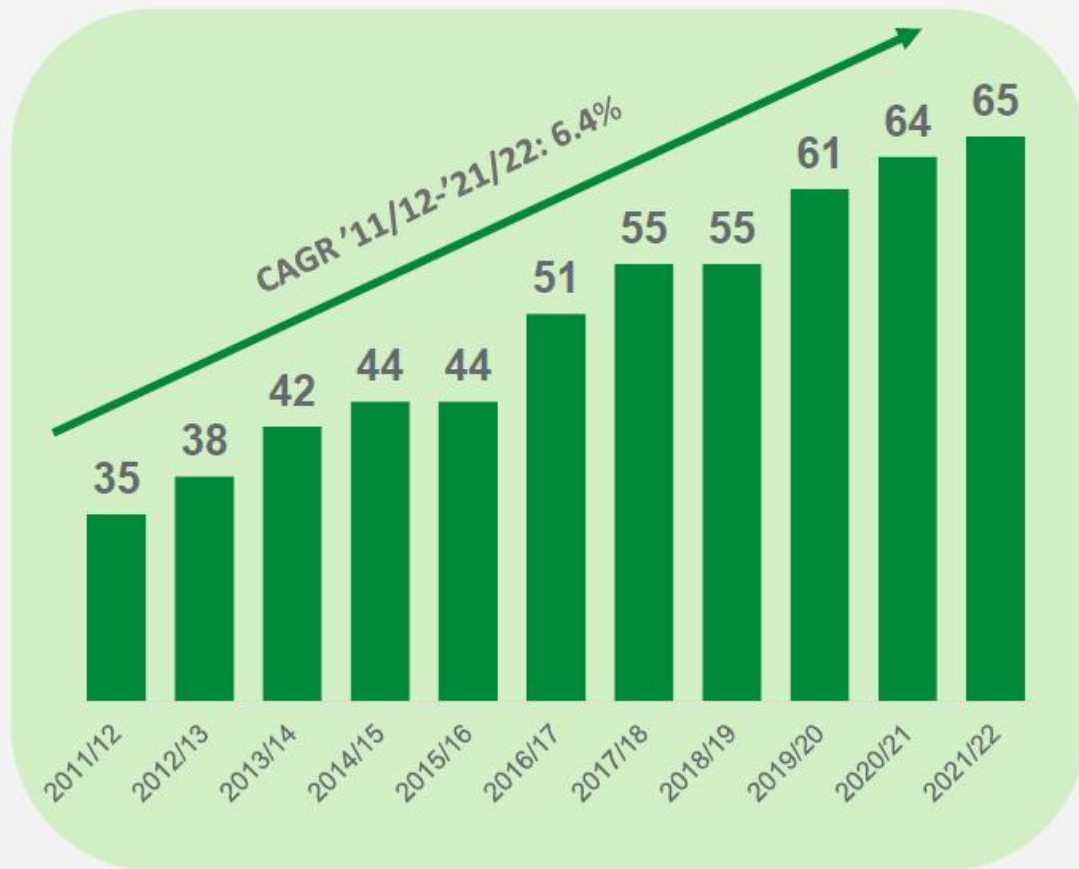


Soybean production (mn ton)



Caramuru is present in the largest producing Brazilian states and benefits from a favorable outlook

 Soybean production in Midwestern Brazil - 21/22 crop (million/ton)



#CaramuruIsInTheRightPlace@TheRightTime

[Kein Titel]



Caramuru has a strong ESG standards to support sustainable NGMO origination with traceability & segregation



1. Origination Control and Zero Legal Deforestation

- ✓ Traceability of 100% of +5k producers
- ✓ Sustentar Standard with +130 indicators
- ✓ Non-GMO ProTerra Seal
- ✓ Pioneering origination in deforestation-free areas in the Amazon biome since 2008 and the Cerrado biome since 2020



3. Civil Society Engagement

- ✓ Best practices for working conditions
- ✓ Small producer support with the Social Biofuel seal and capacity building
- ✓ Support for a number of socio-educational projects in the communities



2. Sustainable use of natural resources

- ✓ Energy cogeneration (80%)
- ✓ Reciclar Project
- ✓ Water consumption reduction targets
- ✓ Water reuse



4. Reduction of GHG emissions

- ✓ Biodiesel and ethanol production
- ✓ Smart transportation matrix, including waterways
- ✓ Energy consumption reduction targets
- ✓ Measuring of GHG Emissions (Scope 1, 2 & 3)

DANKE!
OBRIGADO!

